

# CERTIFICATE OF LOCATION OF GOVERNMENT CORNER

EAST QUARTER Corner of Section 6, Township 107N, Range 39W

5th Principal Meridian, State of Minnesota, County of MURRAY

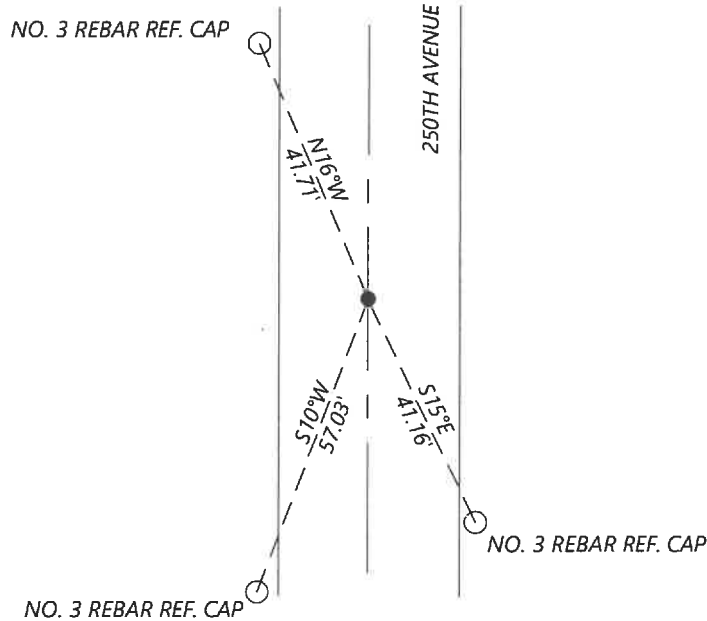
At the corner location shown on the sketch:

On 8/27/2020 found a 1" PIPE WITH DAMAGED YELLOW PLASTIC CAP LS #23008. FLUSH WITH GRADE  
DATE

left monument as found       lowered monument       removed monument (explain)

On \_\_\_\_\_ placed a \_\_\_\_\_  
DATE

### SKETCH OF REFERENCE TIES



Statement of evidence for this corner location is on back of this page.

I hereby certify that this document was researched and prepared by me or under my direct supervision and that I am a licensed Land Surveyor under the laws of the State of Minnesota.

Signature [Handwritten Signature]

Date 6/16/2021 License No. 45874

Title:

- Land Surveyor       Professional Engineer
- County Surveyor       County Engineer

OFFICE OF THE COUNTY RECORDER

County of Murray

I hereby certify that this document was filed in the Co.

Recorder's office at \_\_\_\_\_ M. on the \_\_\_\_\_ day of \_\_\_\_\_ A.D. 20

County Recorder Karen Brown

by JUN 22 2021, Deputy

DOCUMENT NO. \_\_\_\_\_

**Statement of Evidence:**

East Quarter Corner of Section 6, Township 107 North, Range 39 West, 5th Principal Meridian, Murray County, Minnesota.

1861 July, Set post in mound.

1906, October, Survey record for section 5 shows a white limestone 5x8x12" at the corner. It also shows a distance of 2593.4ft to the Southwest section corner and 2520.8ft to the Northwest corner.

2008 November, Corner certificate filed by Perry Zieske shows that he set a 1" iron pipe with cap #23008 at the corner after excavating and finding nothing. He lists coordinates at: N: 192579.58 E: 553479.93

2020 September, Westwood Professional Services searched and found an iron with cap #23008 per 2008 corner certificate. 1906 survey distance for West line of Section 5 is 100ft short. I excavated at 2594ft north from the SW corner of Section 5 and found nothing (it appeared from 1906 survey that the distance 2520.8 to the NW corner might be in error and the true distance was supposed to be 2620.8) I accepted the found Zieske iron and set reference ties.

Analysis of the recovered data, field evidence and survey measurements, indicates that the monument found is the correct perpetuation of this corner. For additional information concerning this corner please contact Westwood Professional Services.